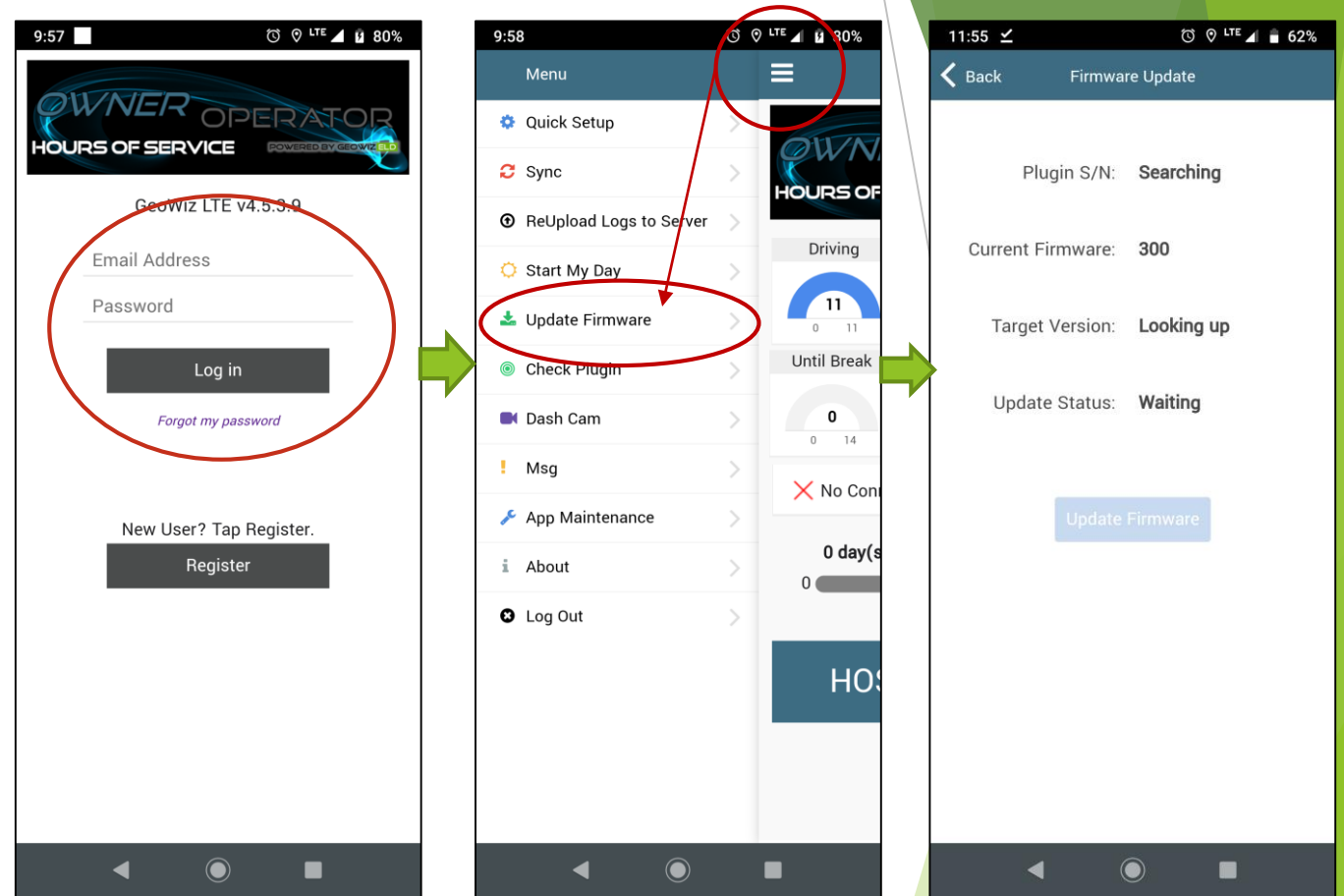


GeoSpace Labs

Button Firmware Upgrade Instructions

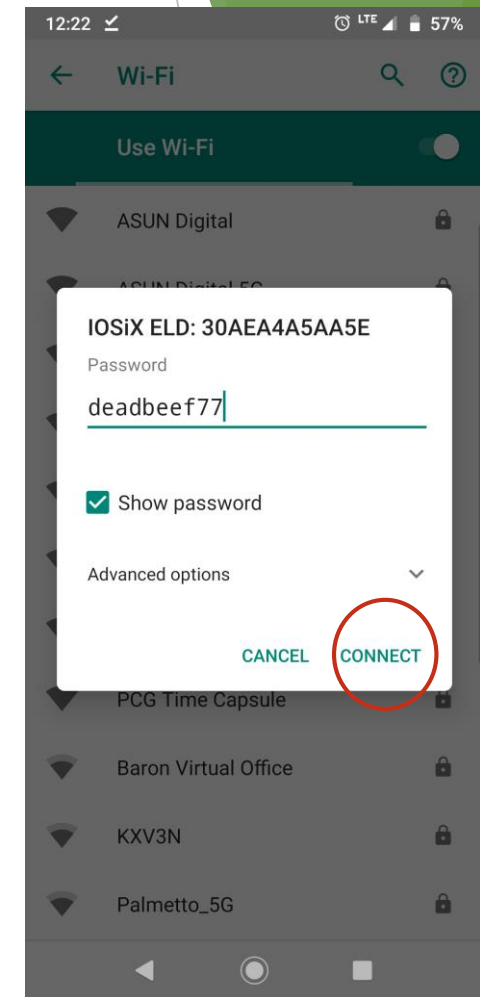
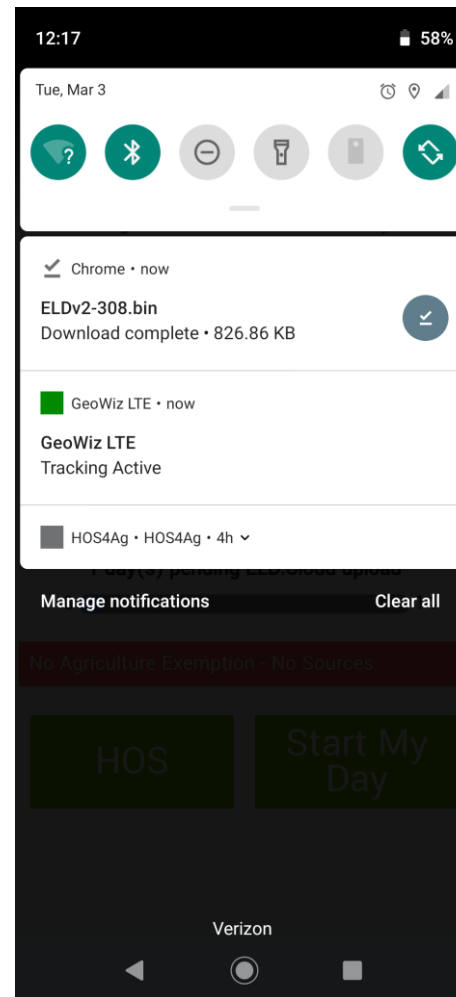
Button Firmware Update Automatic Process

- Log in to the ELD application (GeoWizLTE, HOS4AG, etc.)
- Tap Menu
- Tap Update Firmware
- Firmware update will automatically process.



Button Firmware Update Manual Process

- Tap following link to download update file
<https://eld.cloud/app/docs/firmware/ELDv2-308.bin>
- Connect to available WIFI network
IOSiX ELDXXXXXXXXXX using “deadbeef77”
as password.



Button Firmware Update Manual Process

- Open a web browser, enter 192.168.4.1 in the web address field.
- Enter “123456” in empty Key field.
- Tap Choose File select the ELDv2 file from Downloads.
- Tap Send File
- Button will now update, once complete message “Flash Complete” will appear.

